

**Theme 3 Prevention Healthy and Wellbeing**

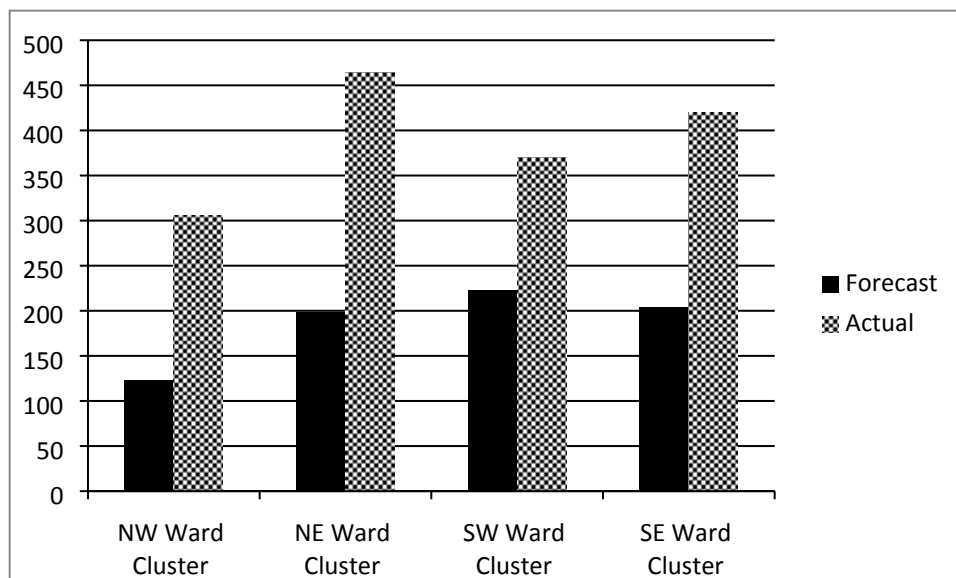
**MSG Programme Period 4 (Jul-Sep 2016) Performance Report**

**Theme 3 – Prevention, Health & Wellbeing:** This theme focuses on seeking key outcomes including:

- Increased number of vulnerable residents leading healthier lifestyles through improved diets, taking regular exercise and related activities, including lunch club attendees
- Improved emotional health and wellbeing of children and young people and families
- Reduced loneliness and social isolation
- Greater community cohesion
- Increased knowledge about where to go for advice and information
- Improved health and well-being through access to cultural activity that brings people together, allows for self-expression including projects around memory and cross generational activity

**Geographical Breakdown**

The table below shows the number of beneficiaries supported during the period July to September 2016 by Ward Cluster:



NW Ward Cluster	NE Ward Cluster	SW Ward Cluster	SE Ward Cluster
<ul style="list-style-type: none"> <li>• Bethnal Green</li> <li>• Spitalfields &amp; Banglatown</li> <li>• St Peter's</li> <li>• Weavers</li> </ul>	<ul style="list-style-type: none"> <li>• Bow East</li> <li>• Bow West</li> <li>• Bromley North</li> <li>• Bromley South</li> <li>• Mile End</li> </ul>	<ul style="list-style-type: none"> <li>• Shadwell</li> <li>• St Dunstons</li> <li>• St Katherine's &amp; Wapping</li> <li>• Stepney Green</li> <li>• Whitechapel</li> </ul>	<ul style="list-style-type: none"> <li>• Blackwall &amp; Cubitt Town</li> <li>• Canary Wharf</li> <li>• Island Gardens</li> <li>• Lansbury</li> <li>• Limehouse</li> <li>• Poplar</li> </ul>

**Prevention, Health & Wellbeing Project Portfolio – Adult Services**

No. of live projects – Jul-Sep 16	No. of projects classed as <b>GREEN</b>	No. of projects classed as <b>AMBER</b>	No. of projects classed as <b>RED</b>
14	12	2	0

There are 14 projects in this category; 12 of which are classed as ‘Green’ and are on course to meet the agreed expenditure targets, service outputs and outcomes as indicated in monitoring reports received.

There are 2 projects classed as Amber:

**Green Candle Dance Company  
Dance for Health at Oxford House**

Project is on track to deliver all outputs and outcomes. Green Candle attended a constructive meeting with Officers on 14<sup>th</sup> December 2016 and discussed revisions to their variation request.

**Toynbee Hall  
Wellbeing in Tower Hamlets**

Project performance is now on track to deliver all outputs and outcomes. A number of outputs were lower on previous quarters but the organisation has made some staffing adjustments and is now making good progress. Officers anticipate the Project will be Green performance rated by March.

**Lunch Club Project Portfolio – Adult Services**

No. of live projects – Jul-Sep 16	No. of projects classed as <b>GREEN</b>	No. of projects classed as <b>AMBER</b>	No. of projects classed as <b>RED</b>
12	11	0	1

There are 12 projects in this category; 11 of which are classed as ‘Green’ and are on course to meet the agreed expenditure targets, service outputs and outcomes as indicated in monitoring reports received.

1 project classed as Red:

**Children Education Group  
Harkness Luncheon Club**

The lunch club project has ceased to continue as no Main Stream Grant has been paid from the start of the project due to the Premises condition.

**Lifelong Learning & Sport Project Portfolio - CLC**

No. of live projects Jul-Sep 16	No. of projects classified as <b>GREEN</b>	No. of projects classified as <b>AMBER</b>	No. of projects classified as <b>RED</b>
9	9	0	0

There are 9 projects in this category; all of which are classed as 'Green' and are on course to meet the agreed expenditure targets, service outputs and outcomes as indicated in monitoring reports received.